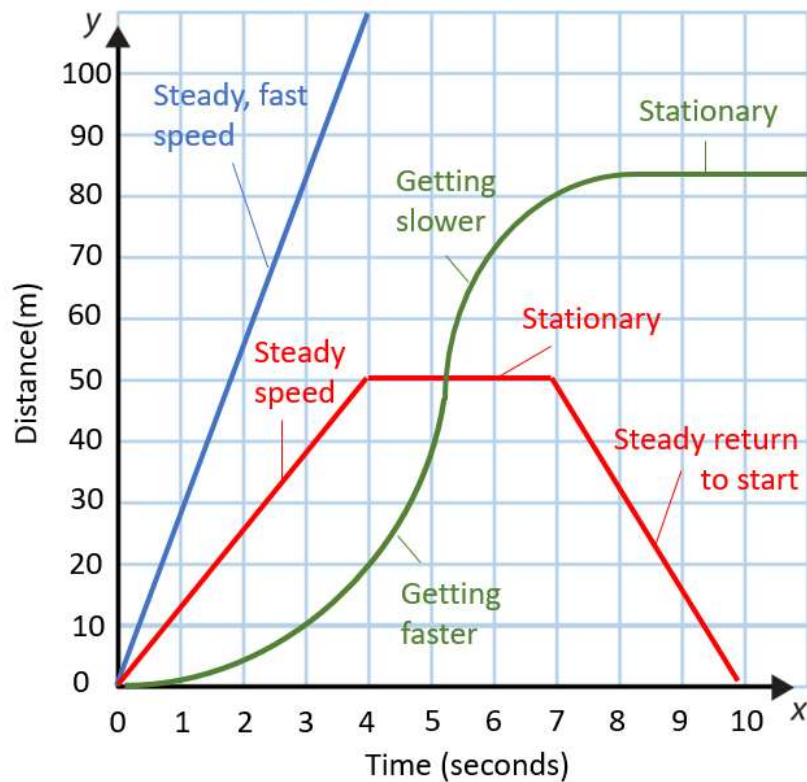


DISTANCE TIME GRAPHS



Key points to remember:

Straight diagonal lines mean an object is moving at a steady speed

A horizontal line means that the object is not moving

Steeper lines mean objects are moving faster

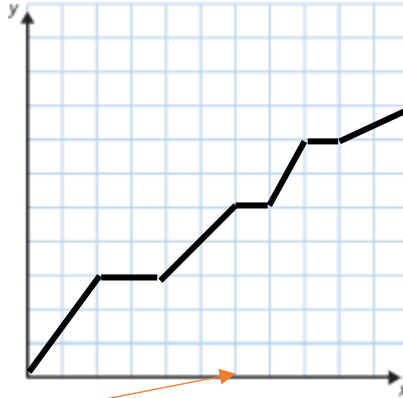
Curving lines indicate a change in speed – speeding up = acceleration, slowing down = deceleration (or *negative acceleration*)

Match the Distance Time graphs to the statements

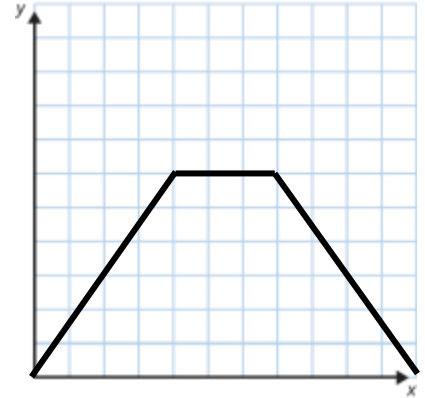
A



B



C

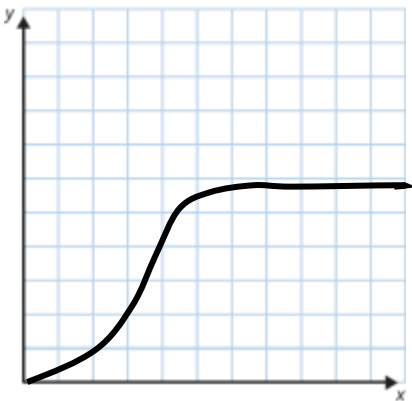


The girl ran to school but was feeling tired and so she stopped every few minutes for a rest

The robot moved at a steady speed, stopped for a while and then came back at the same speed

The journey out in the car was fine but there was some bad traffic and delays on the way back home

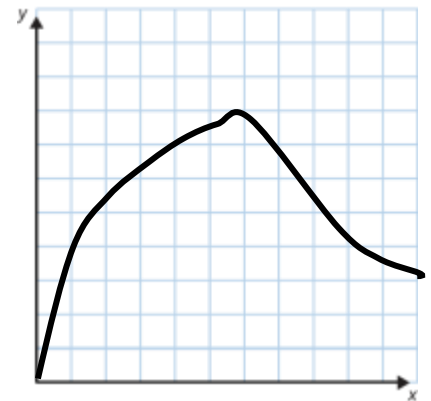
A



B



C



The runner had a good start to the race but got tired and slowed down. On the way back they gave up and left the race.

The car accelerated to a steady speed then slowed to a halt

The aircraft slowed down as it approached the runway where it landed and taxied to a halt